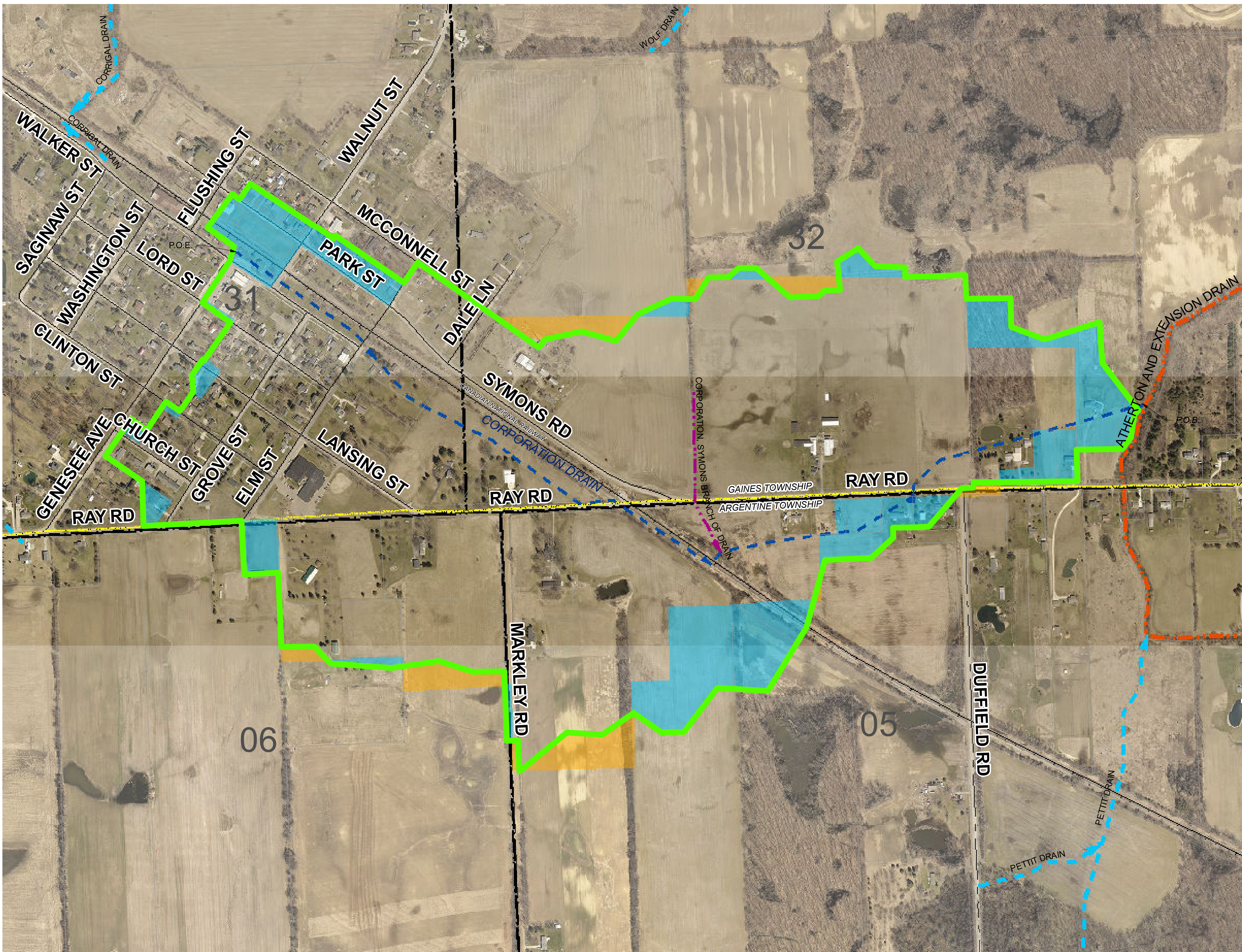


MAP OF
CORPORATION DRAIN #0215
DRAINAGE DISTRICT
 SECTIONS 31 AND 32, GAINES TOWNSHIP,
 SECTIONS 5 AND 6, ARGENTINE TOWNSHIP,
 GENESEE COUNTY, MICHIGAN



PATH: S:\PROJECTS\2022\2022-0436 WEBB CREEK INTERCOUNTY DRAINING\GIS_BASE\197 PREPARATION\GENESEE COUNTY\CORPORATION DRAIN\215_CORPORATION_197 MAP.MXD. PRINTED ON: 01/02/2022. BY: SFLUGH

Legend

- DRAINAGE DISTRICT BOUNDARY
- OUTLET DRAIN
- TRIBUTARY DRAINS
- DRAIN CENTERLINE
- OPEN CHANNEL
- TILE DRAIN
- APPROXIMATE LOCATION OF OTHER DRAINS
- LAND RECOMMENDED TO BE ADDED
- LAND RECOMMENDED TO BE REMOVED
- MUNICIPALITY BOUNDARY
- SECTIONS
- STATE ROADS
- COUNTY ROADS
- LOCAL ROADS
- RAILROAD



0 80 160 320 480 Feet

811 Know what's below.
 Call before you dig
 CAUTION!!
 THE LOCATIONS AND ELEVATIONS OF EXISTING UNDERGROUND UTILITIES SHOWN ON THIS DRAWING ARE ONLY APPROXIMATE. NO GUARANTEE IS EITHER EXPRESSED OR IMPLIED AS TO THE COMPLETENESS OR ACCURACY THEREOF. THE CONTRACTOR SHALL BE EXCLUSIVELY RESPONSIBLE FOR DETERMINING THE EXACT UTILITY LOCATION AND ELEVATION PRIOR TO THE START OF CONSTRUCTION.

CLIENT
GENESEE COUNTY
DRAIN COMMISSIONER
 4610 Beecher Rd.
 Flint, MI 48852

PROJECT TITLE
CORPORATION DRAIN
 SECTIONS 31 AND 32, GAINES TOWNSHIP,
 SECTIONS 5 AND 6, ARGENTINE TOWNSHIP,
 GENESEE COUNTY, MICHIGAN

NO.	REVISIONS

ORIGINAL ISSUE DATE
 APRIL 29, 2022

DRAWING TITLE
PARCEL MAP

PEA JOB NO.	2021-0436
P.M.	RAH
DN.	SEP
DES.	RAH

DRAWING NUMBER:
1 OF 1