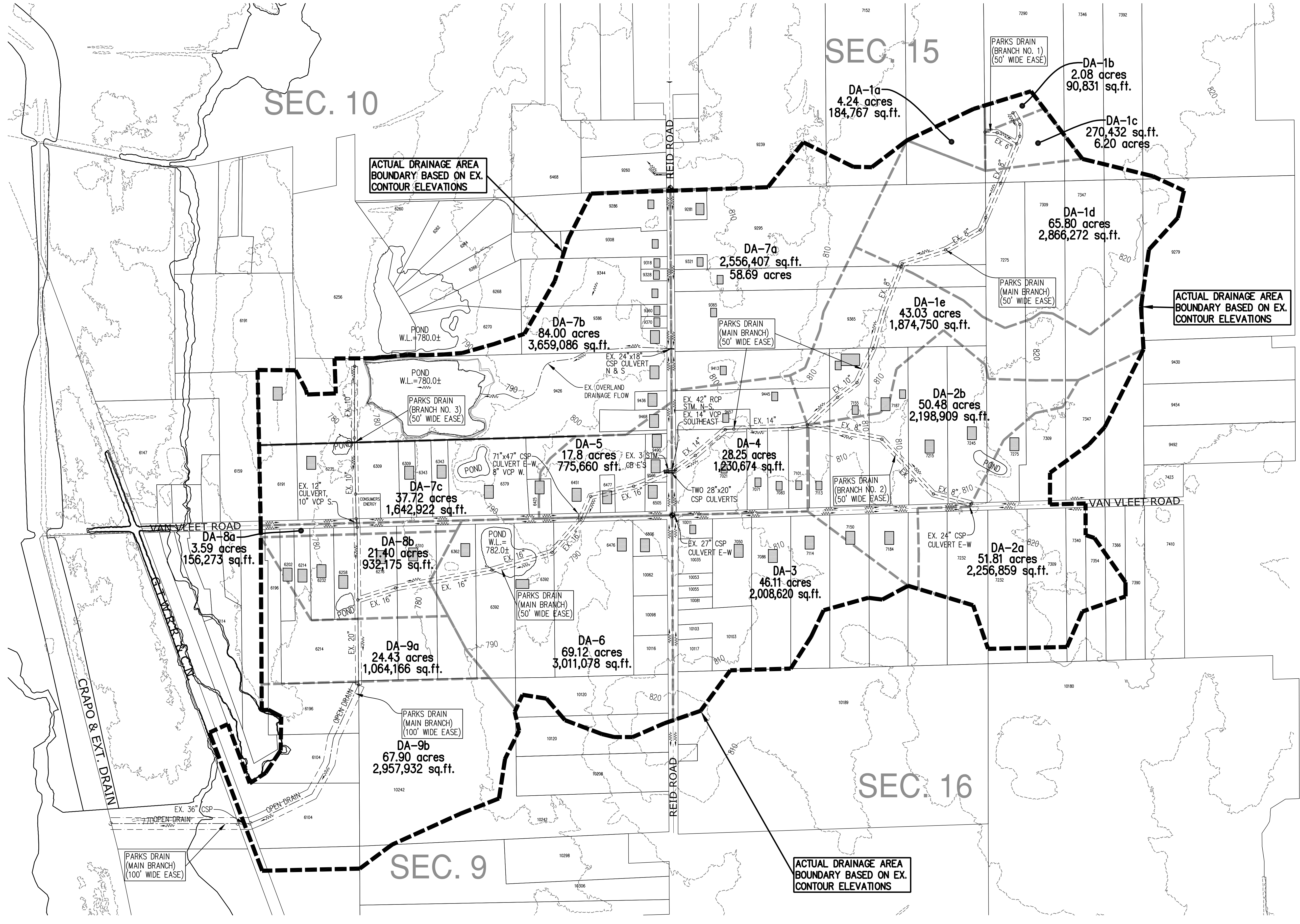


LEGEND

- - - 810 - - - EX. SURFACE CONTOUR LINE
- - - EX. 14" EX. STORM SEWER
- - - EX. OPEN DRAIN
- - - EX. DRAINAGE FLOW ARROW
- EX. BUILDING/HOUSE W/ADDRESS
- - - 8326 - - - SUB DRAINAGE AREA BOUNDARY
- - - DRAINAGE AREA BOUNDARY BASED ON EX. CONTOUR ELEVATIONS

NOTE:
 THE EXISTING 8" TO 12" STORM SEWER IS A CLAY PIPE (VCP) AND THE EXISTING 14" TO 20" STORM SEWER PIPE IS A CONCRETE PIPE (RCP)



UTILITY STATEMENT
 THE UNDERGROUND UTILITIES SHOWN HAVE BEEN LOCATED FROM FIELD SURVEY INFORMATION AND EXISTING DRAWINGS. THE SURVEYOR/ENGINEER MAKES NO GUARANTEE THAT THE UNDERGROUND UTILITIES SHOWN COMPRISE ALL SUCH UTILITIES IN THE AREA, EITHER IN SERVICE OR ABANDONED. THE SURVEYOR/ENGINEER FURTHER DOES NOT WARRANT THAT THE UNDERGROUND UTILITIES SHOWN ARE IN THE EXACT LOCATION INDICATED, ALTHOUGH HE DOES CERTIFY THAT THEY ARE LOCATED AS ACCURATELY AS POSSIBLE FROM INFORMATION AVAILABLE. THE SURVEYOR/ENGINEER HAS NOT PHYSICALLY LOCATED THE UNDERGROUND UTILITIES.

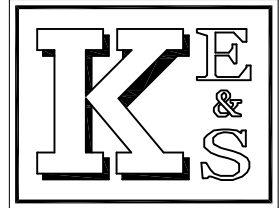
**PRELIMINARY
 NOT FOR
 CONSTRUCTION PURPOSES**

KES JOB NO. 2012-07

SCALE:
 1" = 400'

PREPARED FOR:
**GENESEE COUNTY DRAIN COMMISSIONER
 DIVISION OF SURFACE WATER MNGT.**
 G-4608 BEECHER ROAD, FLINT, MI 48532-2617
 PHONE: (810) 732-1590 FAX (810) 732-1474
 WEBSITE: GDCDWS.COM/SWM

Three full working days before you dig, call the MISS DIG System at **1-800-482-7171**



PREPARED BY:
KRAFT ENGINEERING & SURVEYING, INC.
 engineers - surveyors - planners
 409 WEST SEVENTH STREET FLINT, MICHIGAN 48503
 PHONE: 810.234.2694 or 810.234.2695 FAX: 810.234.2696
 E-MAIL: MAIL@KRAFTENGINEERING.COM

**PARKS DRAIN #0471
 PART OF SECTIONS 9, 10, 15 & 16
 T6N-R5E, GAINES TWP,
 GENESEE COUNTY, MICHIGAN**

**EXHIBIT NO. 1
 DRAINAGE MAP OF
 EXISTING
 CONDITIONS**

REVISIONS	DRN. BY:	RADO	04.11.2013	SHEET NO:
09.27.2013	DSN. BY:	T.L.O.	"	E-1
	CKD. BY:	M.R.P.	"	
	APPR. BY:	M.R.P.	"	