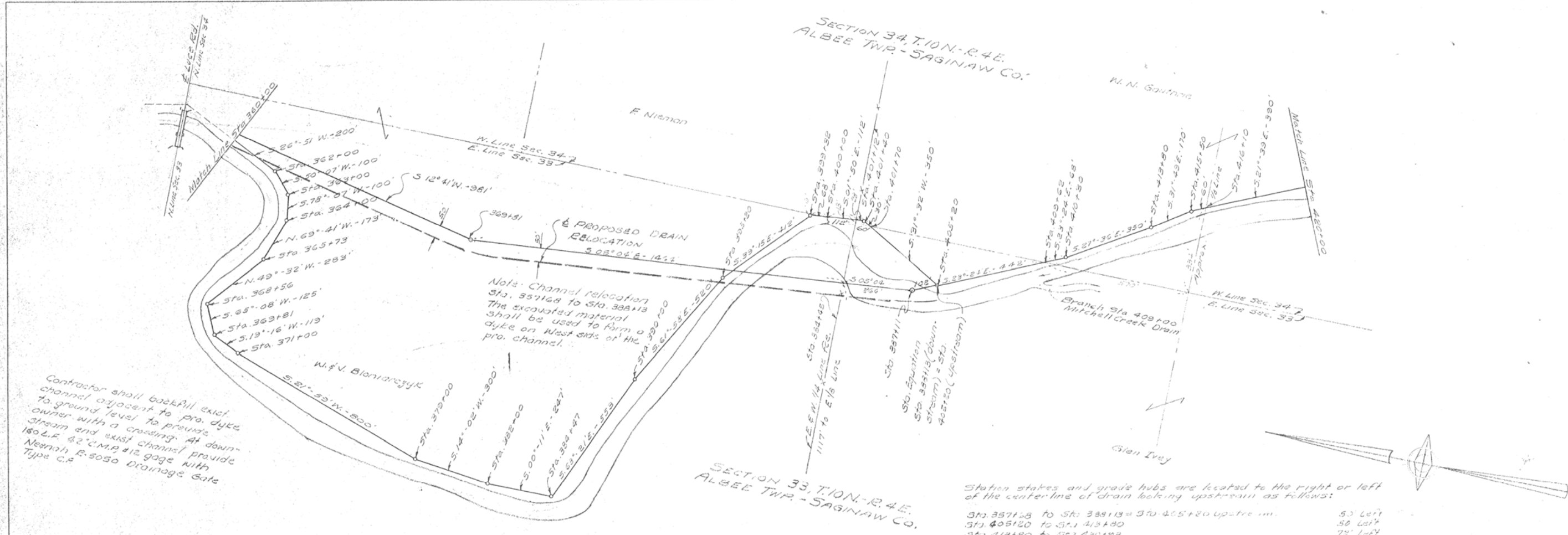


DATE	
BY	
SURVEYED	
PLOTTED	
NOTED	
RETR.	
NO.	

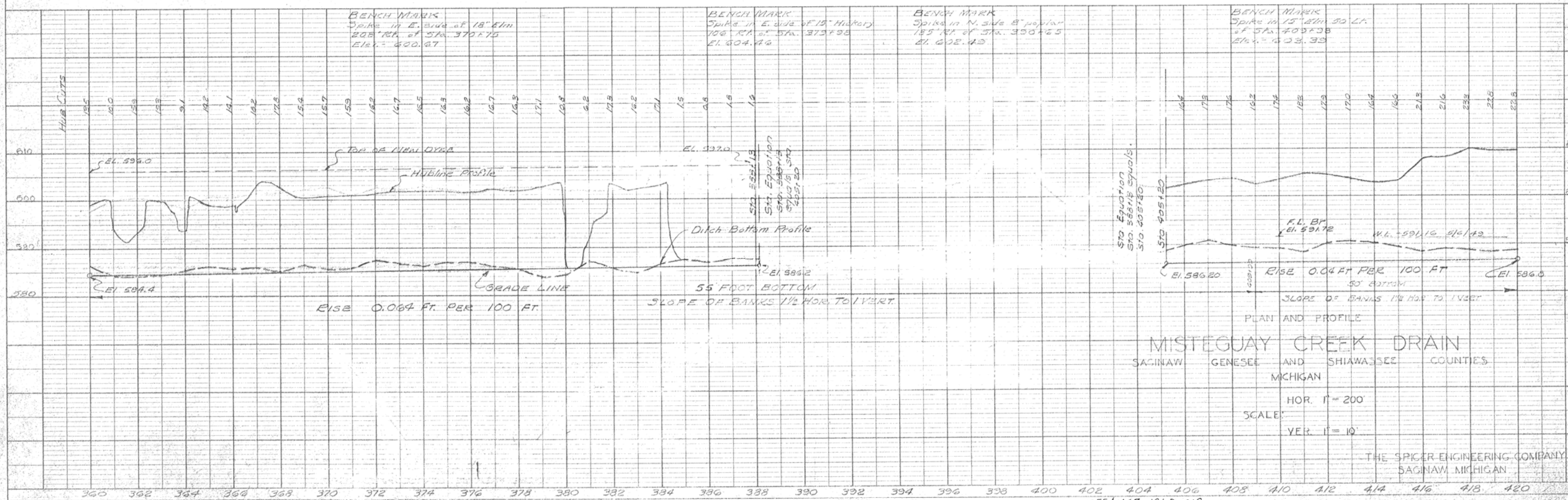
DATE	
BY	
SURVEYED	
PLOTTED	
NOTED	
RETR.	
NO.	



Contractor shall backfill exist. channel adjacent to pro. dyke to ground level to provide owner with a crossing. At down-stream end exist channel provide Neenah R-5050 Drainage Gate Type C.

Note: Channel relocation Sta. 357168 to Sta. 388113 The excavated material shall be used to form a dyke on West side of the pro. channel.

Station stakes and grade hubs are located to the right or left of the centerline of drain looking upstream as follows:
 Sta. 357168 to Sta. 388113 = 50' Left
 Sta. 405120 to Sta. 413180 = 50' Left
 Sta. 413180 to Sta. 420183 = 75' Left



MISTEGUAY CREEK DRAIN
 SAGINAW GENESEE AND SHIawassee COUNTIES
 MICHIGAN

HOR. 1" = 200'
 SCALE
 VERT. 1" = 10'

THE SPICER ENGINEERING COMPANY
 SAGINAW MICHIGAN