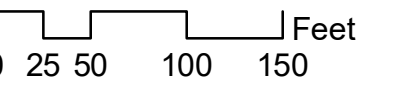
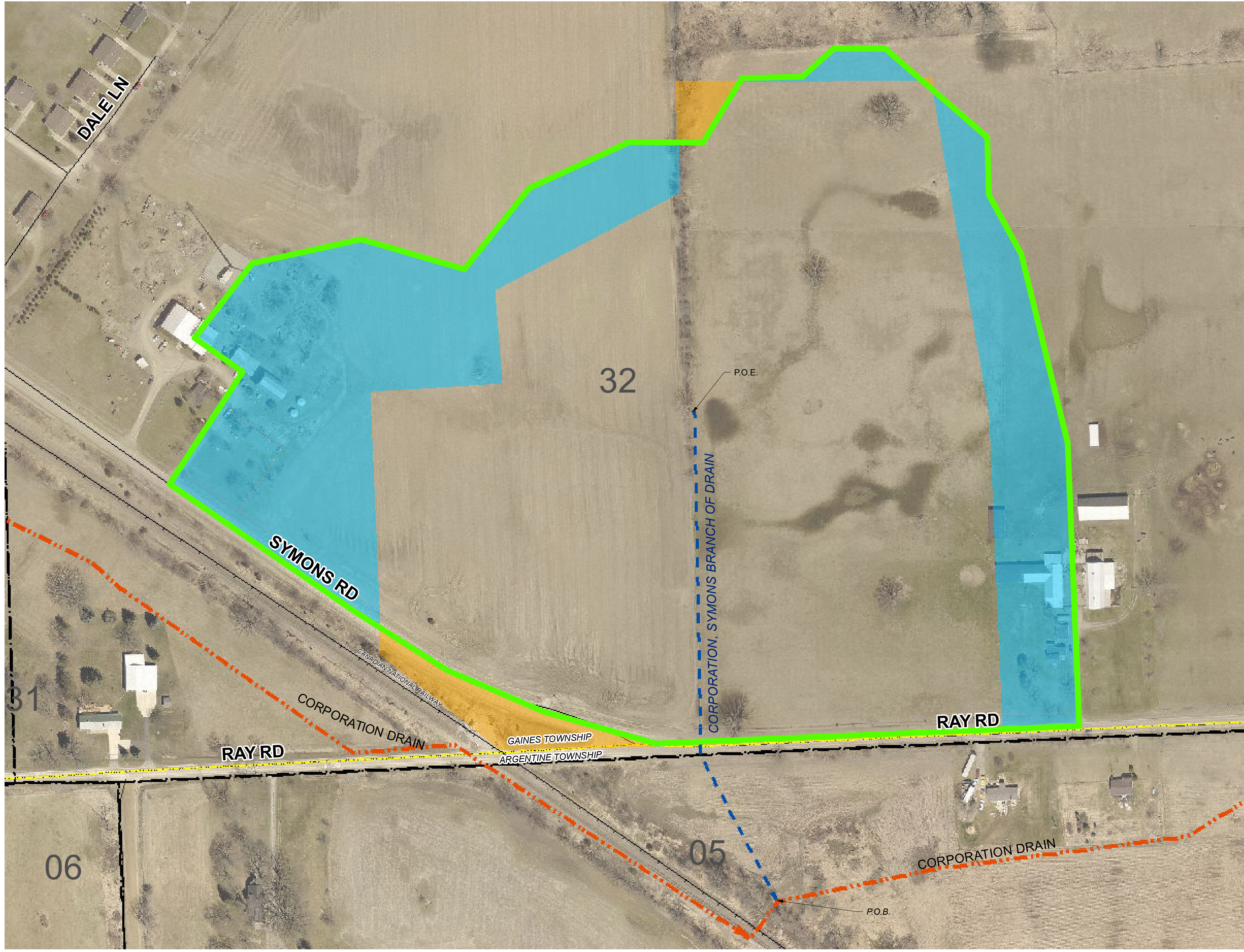


MAP OF SYMONS BRANCH OF CORPORATION DRAIN #0678 DRAINAGE DISTRICT

SECTION 32, GAINES TOWNSHIP, GENESEE COUNTY, MICHIGAN



CAUTION!!
THE LOCATIONS AND ELEVATIONS OF EXISTING UNDERGROUND UTILITIES AS SHOWN ON THIS DRAWING ARE ONLY APPROXIMATE. NO GUARANTEE IS EITHER EXPRESSED OR IMPLIED AS TO THE COMPLETENESS OR ACCURACY THEREOF. THE CONTRACTOR SHALL BE EXCLUSIVELY RESPONSIBLE FOR DETERMINING THE EXACT UTILITY LOCATION AND ELEVATION PRIOR TO THE START OF CONSTRUCTION.



PATH: S:\PROJECTS\2022\2022-0436 WEBB CREEK INTERCOUNTY DRAIN\GENESEE COUNTY\SYMONS BRANCH OF CORPORATION DRAIN\0678L_SYMONS BRANCH OF CORPORATION DRAIN\0678L MAP.MXD, PRINTED ON: 6/27/2022, BY: SPUGH

- Legend**
- DRAINAGE DISTRICT BOUNDARY
 - OUTLET DRAIN
 - DRAIN CENTERLINE
 - OPEN CHANNEL
 - TILE DRAIN
 - APPROXIMATE LOCATION OF OTHER DRAINS
 - LAND RECOMMENDED TO BE ADDED
 - LAND RECOMMENDED TO BE REMOVED
 - MUNICIPALITY BOUNDARY
 - SECTIONS
 - STATE ROADS
 - COUNTY ROADS
 - LOCAL ROADS
 - RAILROAD

CLIENT
**GENESEE COUNTY
DRAIN COMMISSIONER**
4610 Beecher Rd.
Flint, MI 48532

PROJECT TITLE
**SYMONS BRANCH OF
CORPORATION DRAIN**
SECTION 32, GAINES TOWNSHIP,
GENESEE COUNTY, MICHIGAN

REVISIONS

ORIGINAL ISSUE DATE
APRIL 29, 2022

DRAWING TITLE
PARCEL MAP

PEA JOB NO.	2021-0436
P.M.	RAH
DN.	SEP
DES.	RAH
DRAWING NUMBER:	