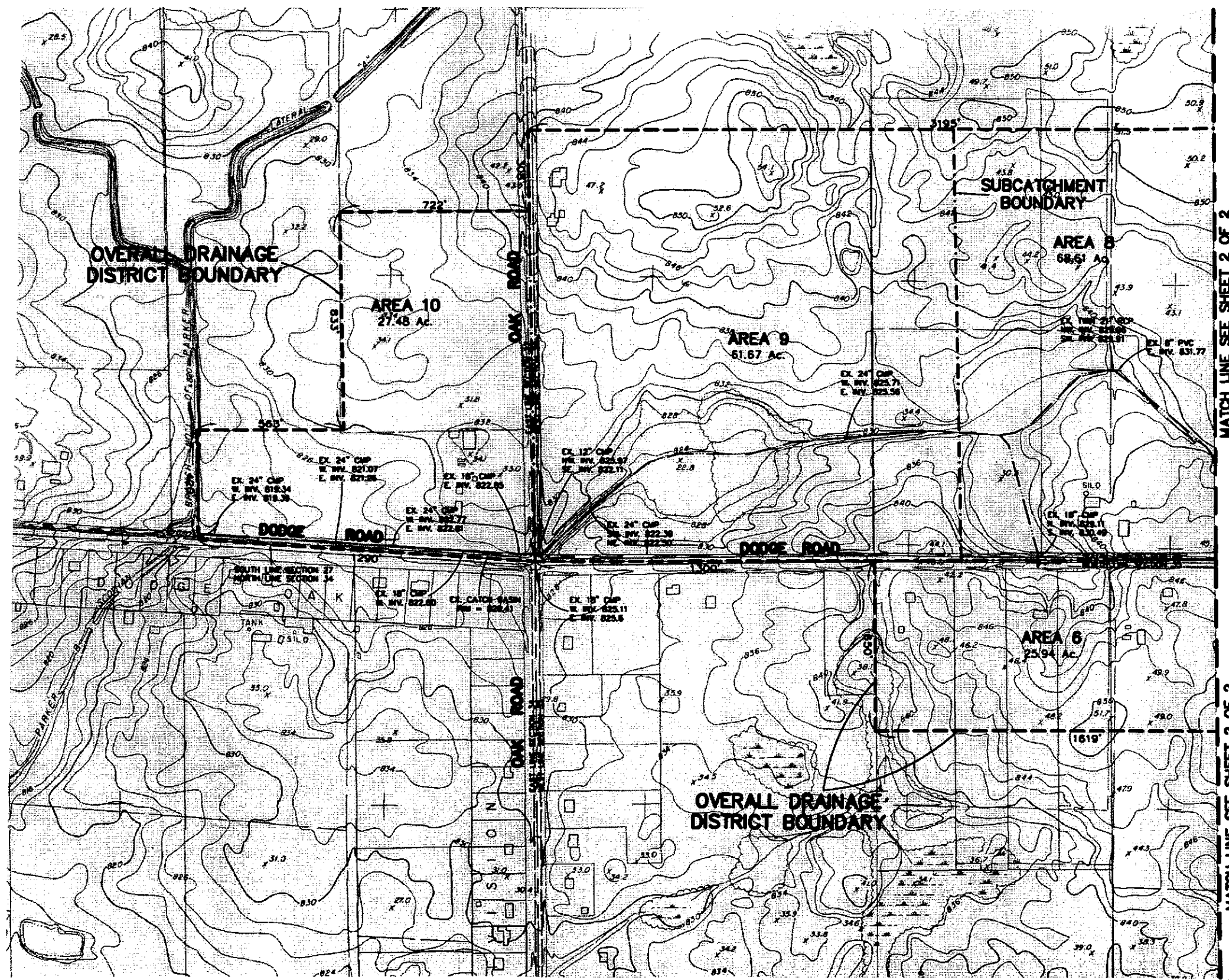
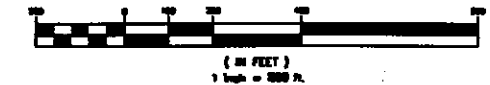


PRELIMINARY ENGINEERING REPORT FOR:
DODGE ROAD BRANCH
 OF THE
PARKER AND SCOTHAN DRAIN NO. 1399
 FOREST TOWNSHIP, GENESEE COUNTY, MICHIGAN



GRAPHIC SCALE



MATCH LINE SEE SHEET 2 OF 2

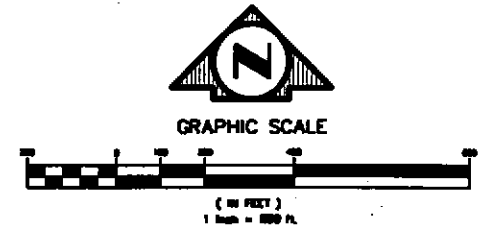
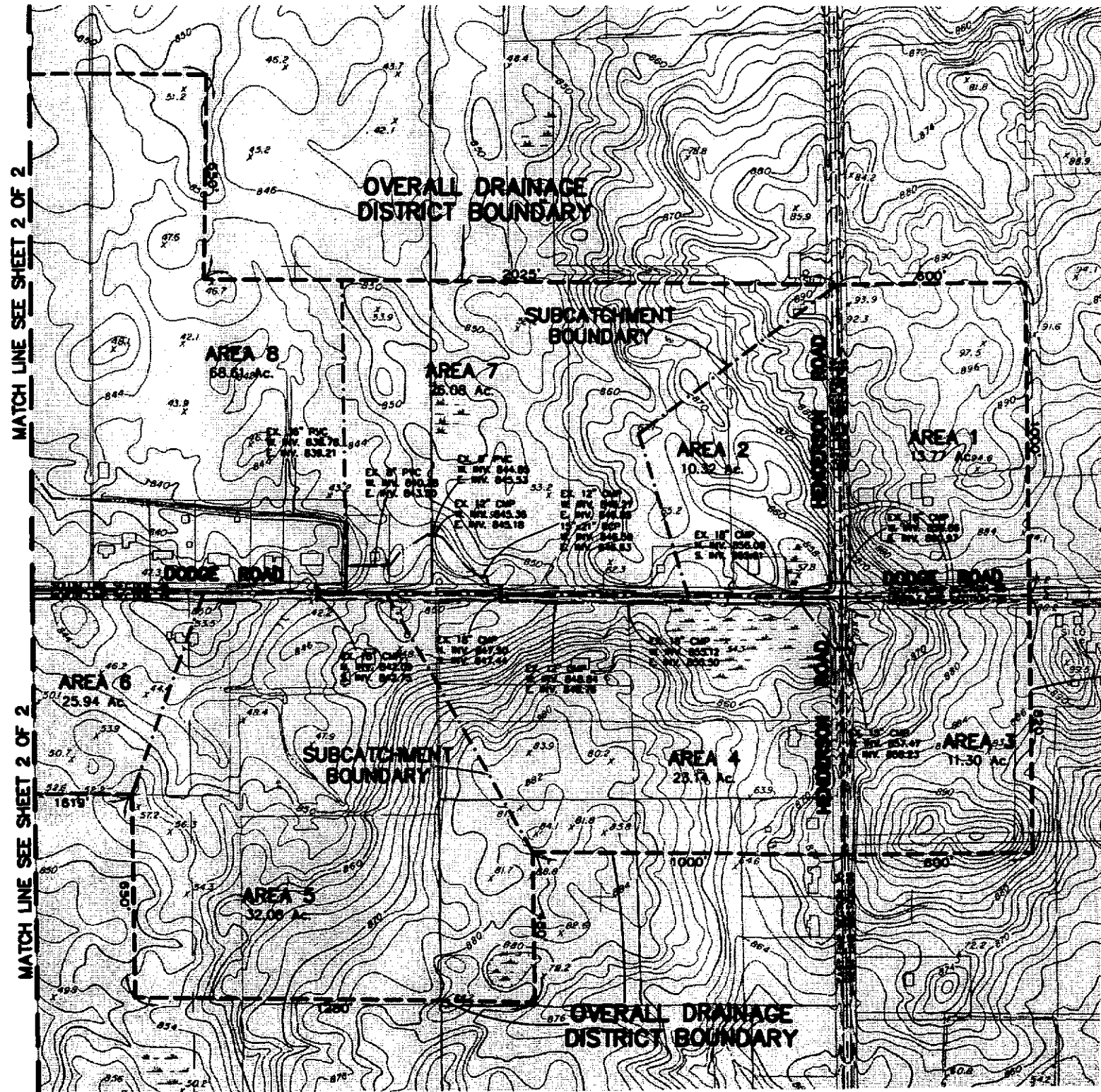
MATCH LINE SEE SHEET 2 OF 2



REVISED:

DODGE ROAD BRANCH OF PARKER AND SCOTHAN DRAIN NO. 1399		
EXISTING DRAIN PLAN		
JEFFREY WRIGHT GENESEE COUNTY DRAIN COMMISSIONER		
SCALE: 1" = 200'	APPROVED BY:	DRAWN BY: JWA
DATE: 10-16-07		REVISED:
F·S·E FLINT SURVEYING & ENGINEERING SINCE 1857		
<small>5370 WALKER ROAD, SUITE 13 • FLINT, MICHIGAN 48931 PHONE: (810) 230-1333 FAX: (810) 230-1334</small>		

PRELIMINARY ENGINEERING REPORT FOR:
DODGE ROAD BRANCH
 OF THE
PARKER AND SCOTHAN DRAIN NO. 1399
 FOREST TOWNSHIP, GENESEE COUNTY, MICHIGAN



OVERALL DRAINAGE DISTRICT BOUNDARY

REVISED:	
DODGE ROAD BRANCH OF PARKER AND SCOTHAN DRAIN NO. 1399	
EXISTING DRAIN PLAN	
JEFFREY WRIGHT	
GENESEE COUNTY DRAIN COMMISSIONER	
SCALE: 1" = 200'	APPROVED BY:
DATE: 10-10-07	DATE:

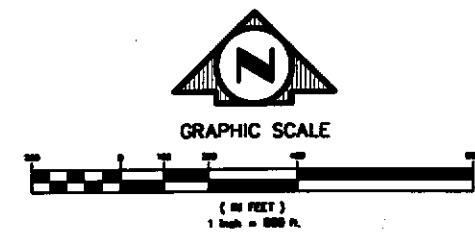
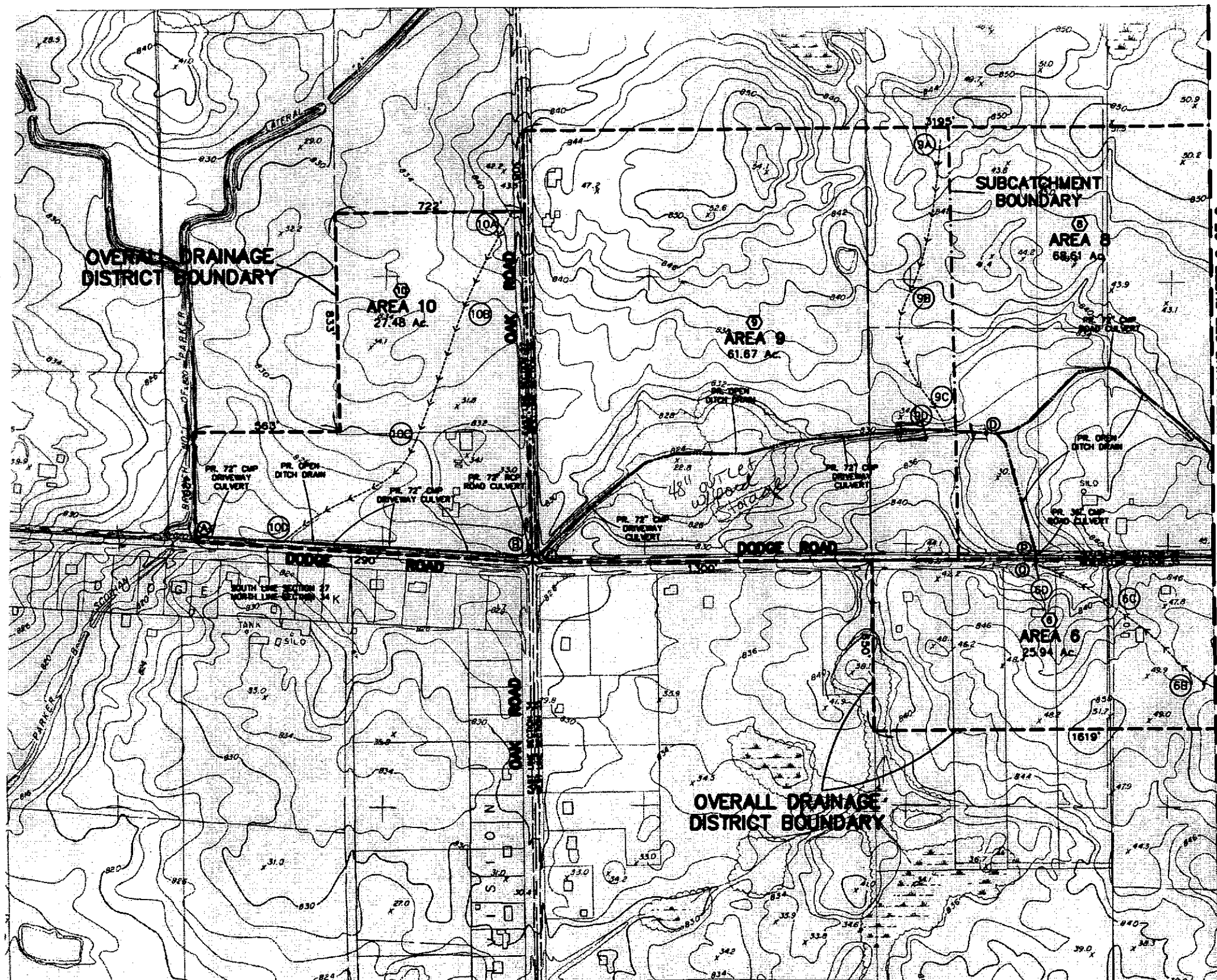


E.S.E.

PRELIMINARY

PLAN

PRELIMINARY ENGINEERING REPORT FOR:
DODGE ROAD BRANCH
 OF THE
PARKER AND SCOTHAN DRAIN NO. 1399
 FOREST TOWNSHIP, GENESEE COUNTY, MICHIGAN



LEGEND

(A)	DESIGN POINT
(B)	SUBCATCHMENT AREA
(C)	OVERLAND FLOW POINT
---	OVERLAND FLOW ROUTE
---	EXISTING DRAINAGE ROUTE

MATCH LINE SEE SHEET 2 OF 2

MATCH LINE SEE SHEET 2 OF 2

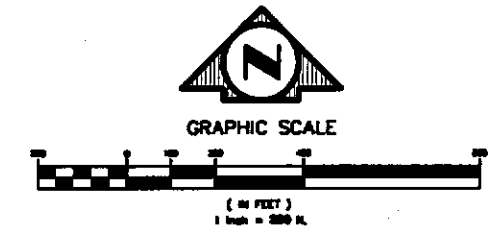
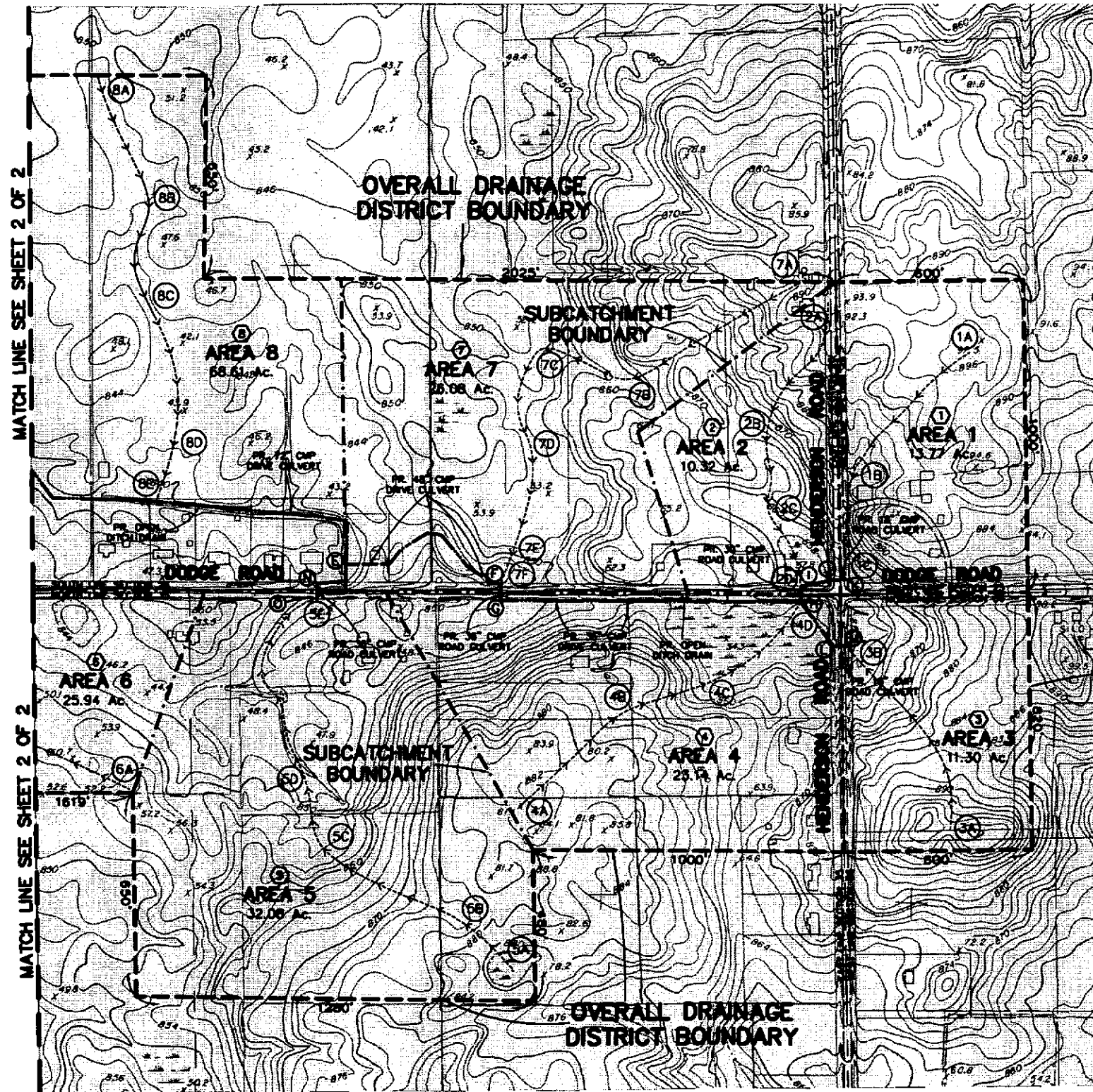
8-72" xings

ok



REVISIONS:		
DODGE ROAD BRANCH OF PARKER AND SCOTHAN DRAIN NO. 1399		
PRELIMINARY PLAN		
JEFFREY WRIGHT GENESEE COUNTY DRAIN COMMISSIONER		
SCALE: 1" = 200'	APPROVED BY:	DRAWN BY: WJA
DATE: 10-16-07		REVISIONS:
F·S·E		FLINT SURVEYING & ENGINEERING SINCE 1957
5370 MILLER ROAD, SUITE 13 • SHIRAZ CREEK, MI 48473 PHONE: (810) 230-1333 FAX: (810) 230-7844		
DRAWING NUMBER: 23758	SHEET: 1 OF 2	

PRELIMINARY ENGINEERING REPORT FOR:
DODGE ROAD BRANCH
 OF THE
PARKER AND SCOTHAN DRAIN NO. 1399
 FOREST TOWNSHIP, GENESEE COUNTY, MICHIGAN



- LEGEND**
- ③ HYDROCAD SUBCATCHMENT AREA
 - ④ HYDROCAD DRAINAGE REACH
 - △ HYDROCAD CULVERT
 - ⊙ HYDROCAD OVERLAND FLOW POINT
 - OVERLAND FLOW ROUTE
 - EXISTING DRAINAGE ROUTE
 - Ⓐ DESIGN POINT

OVERALL DRAINAGE DISTRICT BOUNDARY

REVISED: DODGE ROAD BRANCH OF PARKER AND SCOTHAN DRAIN NO. 1399	
PRELIMINARY PLAN	
JEFFREY WRIGHT GENESEE COUNTY DRAIN COMMISSIONER	
SCALE: 1" = 200'	APPROVED BY:
DATE: 10-16-07	DRAWN BY: WJA
REVISED:	
F·S·E FLINT SURVEYING & ENGINEERING SINCE 1957	
5370 MILLER ROAD, SUITE 13 • SHIRTZ CREEK, MI 48473 PHONE: (810) 230-1333 FAX: (810) 230-7844	
DRAWING NUMBER: 23758	SHEET: 2 OF 2

