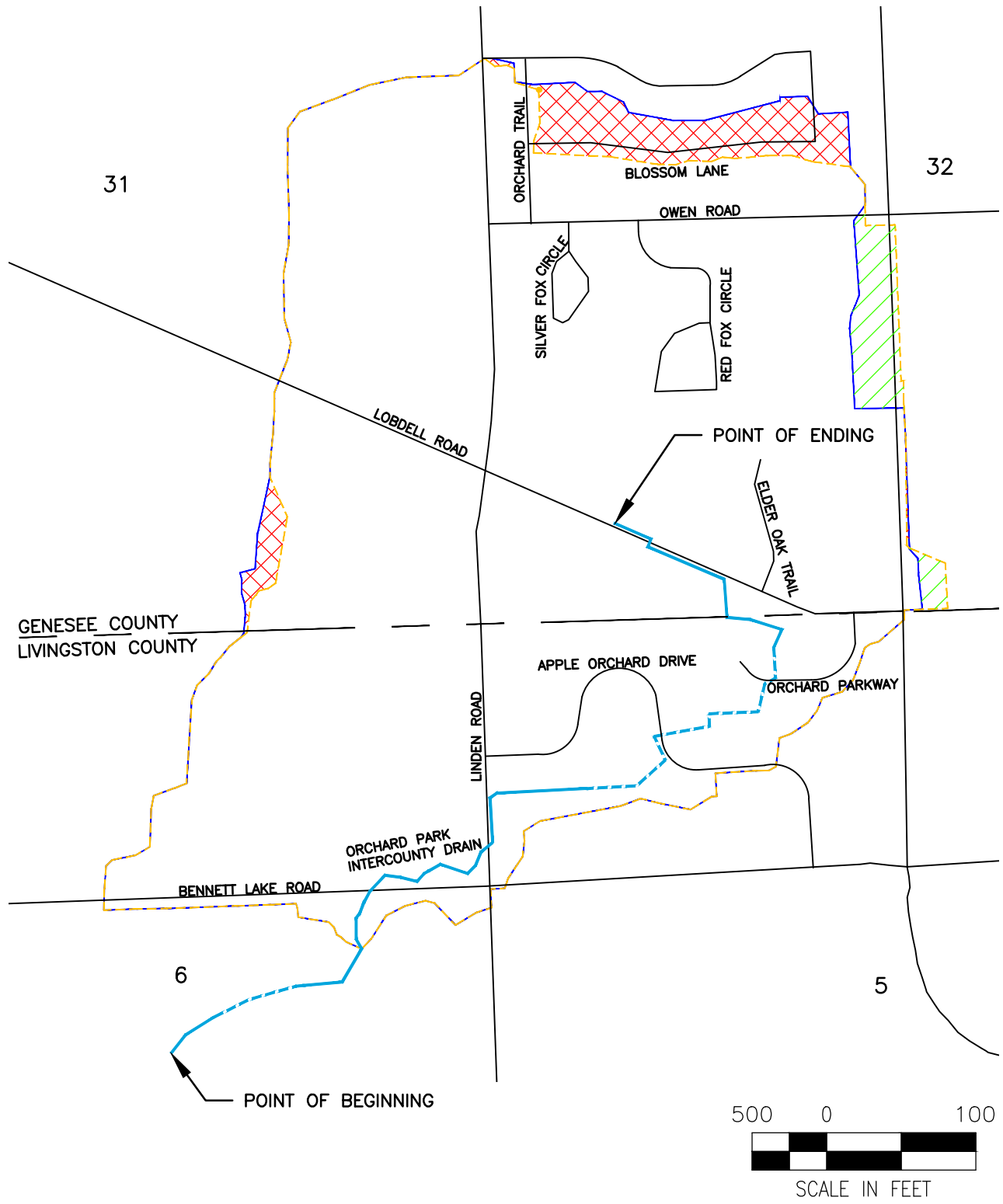



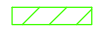



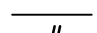




ORCHARD PARK INTERCOUNTY DRAIN LANDS ADDED AND REMOVED DRAINAGE DISTRICT

SECTIONS 31 & 32 T5N, R6E
FENTON TOWNSHIP, GENESEE COUNTY, MICHIGAN
SECTIONS 5 & 6 T4N, R6E
TYRONE TOWNSHIP, LIVINGSTON COUNTY, MICHIGAN



LEGEND

-  LANDS REMOVED
-  LANDS ADDED
-  ENCLOSED DRAIN
-  OPEN CHANNEL
-  HISTORIC DRAINAGE DISTRICT BOUNDARY
-  REVISED DRAINAGE DISTRICT BOUNDARY
-  ROADS
-  SECTION NUMBERS

DRAINAGE DISTRICT INFORMATION

HISTORIC DISTRICT:	486.3 ACRES
REVISED DISTRICT:	475.8 ACRES
LANDS ADDED:	10.0 ACRES
LANDS REMOVED:	20.5 ACRES

DRAIN LENGTH

ORCHARD PARK INTERCOUNTY DRAIN	1.4 MILES
--------------------------------	-----------