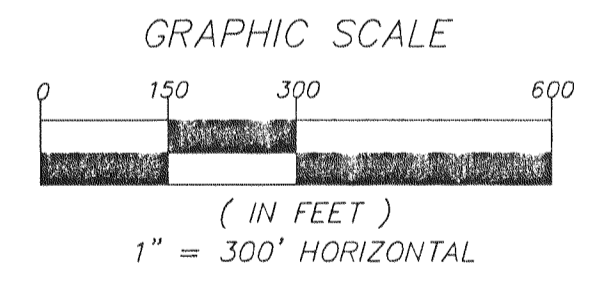
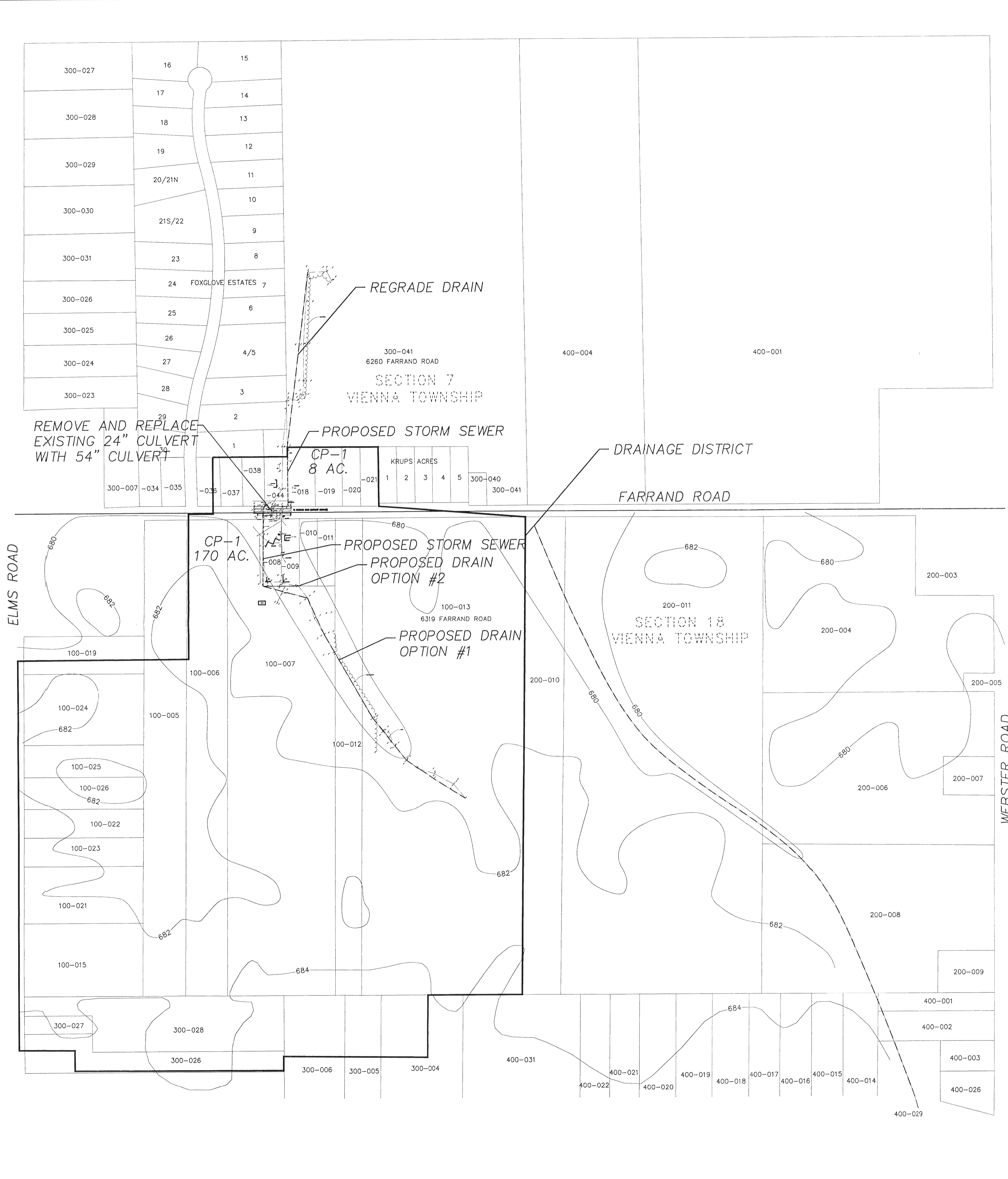
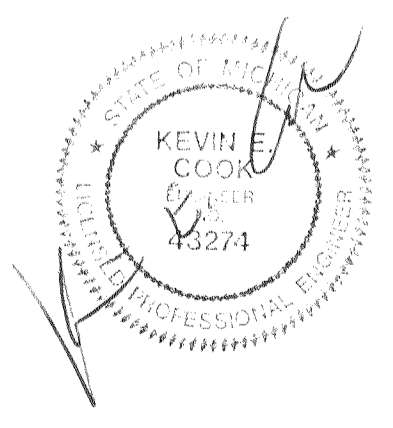


FARRAND ROAD CROSSING DETAIL  
SCALE: 1" = 40' HORIZONTAL



**LEGEND**

	STORM SEWER & MANHOLE
	SANITARY SEWER & MANHOLE
	WATERMAIN, HYDRANT, & VALVE
	GAS MAIN & VALVE
	BURIED TELEPHONE & MANHOLE
	UNDER GROUND ELECTRIC & MANHOLE
	OVERHEAD ELECTRIC POLE & GUY WIRE
	CATCH BASIN (SQUARE & ROUND)
	WATER MANHOLE
	CONTOUR LINE
	FENCE
	GUARD RAIL
	LIGHT POLE
	SIGN
	STREET SIGN
	MAILBOX
	MONITOR WELL



**REVISIONS**

1.	REVISED PER CCDC-SWMD COMMENTS, 11-7-12

**CHMP INC.**  
 5198 TERRITORIAL RD. CONSULTING ENGINEERS, SURVEYORS, & ARCHITECTS GRAND BLANC MI. 48439

PREPARED FOR:  
 JEFFREY WRIGHT, COMMISSIONER  
 GENESEE COUNTY DRAIN COMMISSION  
 4608 BEECHER ROAD  
 FLINT, MICHIGAN 48532

PROPOSED BRANCH TO THE  
 PINE RUN, CLAYTON BRANCH, #1419  
 PART OF SECTIONS 7 AND 18, VIENNA TOWNSHIP

DATE DRAWN: 10-31-12  
 DATE REVISED: 11-16-12  
 CHMP JOB NUMBER: 12004300  
 SHEET 1