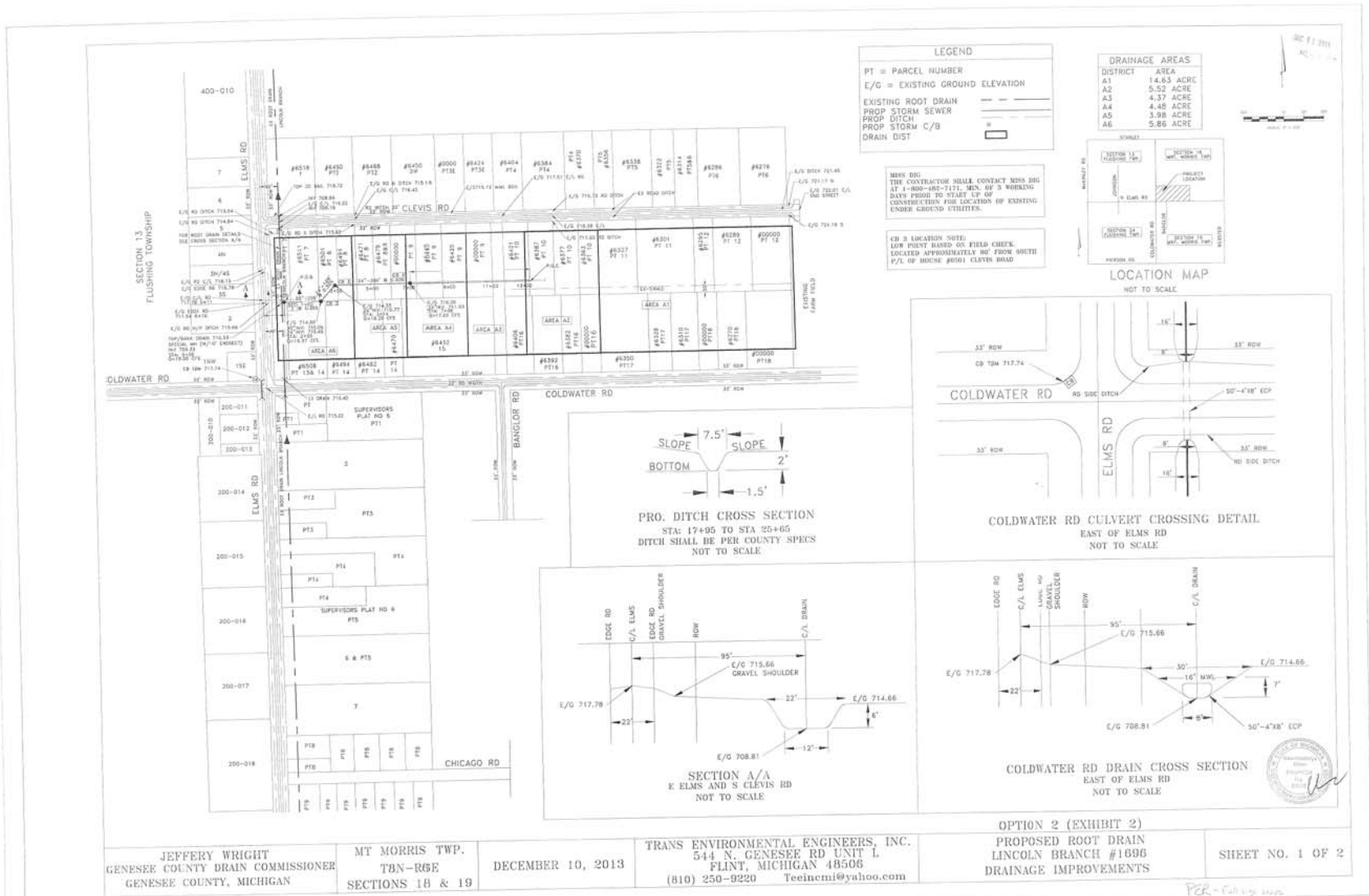


1696perattach1 (10944x7401x2 tiff)



LEGEND

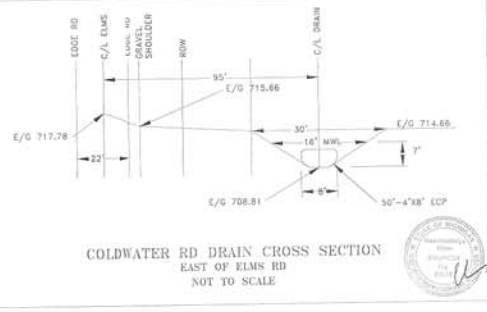
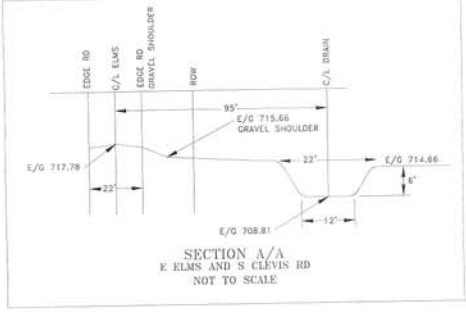
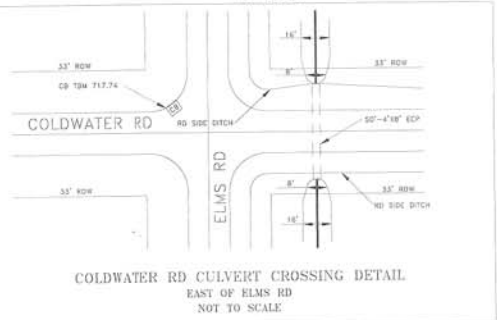
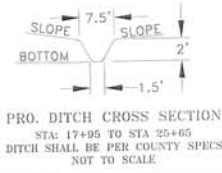
PT = PARCEL NUMBER
 E/G = EXISTING GROUND ELEVATION
 EXISTING ROOT DRAIN
 PROP STORM SEWER
 PROP DITCH
 PROP STORM C/B
 DRAIN DIST

DRAINAGE AREAS

DISTRICT	AREA	ACRE
A1	14.83	ACRE
A2	5.52	ACRE
A3	4.37	ACRE
A4	4.48	ACRE
A5	3.88	ACRE
A6	5.86	ACRE

MESS DIG THE CONTRACTOR SHALL CONTACT MESS DIG AT 1-800-882-7171, MEN. OF 3 WORKING DAYS PRIOR TO START OF CONSTRUCTION, FOR LOCATION OF EXISTING UNDERGROUND UTILITIES.

CB 3 LOCATION NOTED LOW POINT BASED ON FIELD CHECK, LOCATED APPROXIMATELY 80' FROM SOUTH P/L OF HOUSE #6001 CLEVIS ROAD



JEFFERY WRIGHT
 GENESSEE COUNTY DRAIN COMMISSIONER
 GENESSEE COUNTY, MICHIGAN

MT MORRIS TWP.
 TBN-R5E
 SECTIONS 18 & 19

DECEMBER 10, 2013

TRANS ENVIRONMENTAL ENGINEERS, INC.
 544 N. GENESEE RD UNIT L
 FLINT, MICHIGAN 48506
 (810) 250-9220 Teinemi@yahoo.com

OPTION 2 (EXHIBIT 2)
 PROPOSED ROOT DRAIN
 LINCOLN BRANCH #1696
 DRAINAGE IMPROVEMENTS

SHEET NO. 1 OF 2

PER - Full size copies