

#0138 LUM & EXTENSION, BRANCH #1 OF

NOTICE OF

REVIEW OF APPORTIONMENT

REVIEW OF DRAINAGE DISTRICT BOUNDARY

BIDDING DRAIN CONTRACT

The property which you own in the #0138 Lum & Extension, Branch #1 of Drainage District will be assessed a share of the construction costs. At the meeting to review the apportionment of benefits, The Drain Commissioner will have tentative apportionments against parcels and municipalities within the drainage district available for review.

This meeting will be held:

May 30, 2018 from 9 a.m. to 5 p.m.

Genesee County Drain Office, 4608 Beecher Road, Flint, MI 48532

Please retain the envelope of this notice, as the parcel number on mailing label is necessary in answering questions.

This construction is the result of a petition submitted to me, Genesee County Drain Commissioner on July 28, 2011 to make drainage improvements in this drain district. A public hearing was held with Drainage Board determining there was a necessity for improvements. An Engineer designed plans to resolve this drainage problem and construction bids will be taken on May 18, 2018. Thomas Jones, Engineer, will answer engineering design and construction questions at (810) 732-1590.

Note: Until bids are opened and reviewed estimates cannot be given regarding your assessment. Assessment information will be available on or after May 30, 2018 in person at the above address, over the phone at the above phone number or online at www.GCDCSWM.com under Assessments. You will be given until June 12, 2018 to prepay your assessment, if you wish before we borrow the money and not incur any interest charges. If drain assessments against land that are collected by installment, the land owner may pay them in full with any interest to date at any time and thereby avoid further interest charges. Drain assessments against land will be collected in the same manner as property taxes. (will be placed on the winter property tax bill.)

Weather permitting; construction of this drain will start upon receipt of the borrowed money. My office will assist you in answering questions concerning the #0138 Lum & Extension, Branch #1 of.

The #0138 Lum & Extension, Branch #1 of Drainage District consists of the following:

GENESEE COUNTY AT LARGE

GAINES TOWNSHIP AT LARGE

MUNDY CHARTER TOWNSHIP AT LARGE

And a parcel of land described as: The revised drainage district boundary as filed in the Genesee County Drain Commissioner's Office. Which includes an area of land that receives benefit from the 7/28/2011 petition project described as Beginning on the South ¼ Corner of section 18, T6N, R6E, Mundy Township, Genesee County, Michigan; thence along Grand Blanc Rd N 87°47'47" E, 97.79 ft; thence S 01°49'53" E, 385.98 ft; thence S 01°20'06" E, 679.86 ft; thence S 88°02'51" W, 95.54 ft; thence S 01°25'06" E, 427.32 ft; thence S 88°32'11" W, 580.23 ft; thence N 00°58'45" E, 253.94 ft; thence S 89°57'09" W, 451.17 ft; thence S 01°58'40" E, 433.91 ft; thence S 89°33'17" W, 1675.39 ft; thence N 02°02'43" W, 146.81 ft along the northsouth line between Section 19 of Mundy Twp and Section 24 of Gaines Twp; thence N 89°40'09" W, 156.81 ft; thence N 00°01'36" W, 279.95 ft; thence S 89°49'12" W, 165.57 ft; thence N 00°32'04" W, 1102.59 ft; thence N 88°37'46" W, 179.18 ft; thence N 02°01'27" W, 126.48 ft to Grand Blanc Rd; thence in Section 13 of Gaines Twp N 00°59'38" W, 52.52 ft; thence N 90°00'00" E, 62.5 ft; thence N 02°47'34" W, 42.76 ft; thence N 89°53'02" E, 93.06 ft; thence N 03°00'21" W, 53.01 ft; thence N 89°29'35" E, 78.48 ft; thence N 02°14'21" W, 35.55 ft; thence N 88°04'05" E, 191.57 ft; thence N 00°44'55" W, 170.12 ft; thence S 89°34'59" E, 66.81 ft to Elms Rd; thence S 01°23'49" E, 42.72 ft; thence N 87°55'03" E, 199.18 ft; thence N 00°04'04" W, 46.49 ft; thence N 86°27'37" E, 168.72 ft; thence N 00°17'17" E, 299.15 ft; thence N 87°55'03" E, 48.79 ft; thence N 00°47'21" W, 321.84 ft; thence N 89°08'18" E, 70.5 ft; thence N 00°20'10" W, 328.58 ft; thence N 88°01'30" E, 69.11 ft; thence N 00°25'22" W, 322.71 ft; thence N 87°57'17" E, 200.18 ft; thence N 00°55'27" W, 147.68 ft; thence N 88°27'07" E, 220.38 ft; thence S 00°56'49" E, 144.1 ft; thence N 87°59'58" E, 238.78 ft; thence S 01°44'07" E, 967.36 ft; thence N 87°30'38" E, 54.83 ft; thence S 02°05'52" E, 162.65 ft; thence S 87°42'34" E, 29.79 ft; thence S 01°34'39" E, 320.09 ft; thence N 89°21'16" E, 422.76 ft; thence S 03°07'01" E, 192.72 ft; thence N 88°07'35" E, 402.28 ft; thence N 02°28'59" W, 17.05 ft; thence N 87°41'03" E, 354.37 ft; thence N 01°55'40" W, 31.31 ft; thence N 88°14'13" E, 134.07 ft; thence S 00°47'31" E, 88.72 ft to Grand Blanc Rd; thence S 89°59'16" E, 25.1 ft to the point of beginning.

The Drain Commissioner will hold a Day of Review of Drainage district Boundaries to hear the proofs and allegations and to carefully reconsider and review the description of lands comprising the Drainage District for the #0138 Lum & Extension, Branch #1 of Drain, and determine whether the addition and/or deletion of lands will more accurately define the boundaries of the land benefitted by the Drain and whether such addition and/or deletion of lands is just and equitable pursuant to section 197 of Act 40, P.A. 1956 as amended.

This meeting will be held:

May 30, 2018 from 9 a.m. to 5 p.m.

Genesee County Drain Office, 4608 Beecher Road, Flint, MI 48532

The lands to be added or deleted as recommended by a licensed professional engineer or surveyor for the Drain are shown on a map that is available in person at the above address, online at www.GCDCSWM.com under Construction and attached to copies of this notice that has been mailed out. The drainage district described above includes the recommended changes.

All known and non-resident persons, Owner and persons interested in the above described lands and You, Genesee County Clerk, Mundy Township Supervisor, Gaines Township Supervisor and Genesee County Road Commission, are hereby notified that at the time and place thereafter to which said bid may be adjourned, I shall proceed to receive bids for the CONSTRUCTION on the said #0138 Lum & Extension, Branch #1 of in the manner hereinafter stated; and, also, that at such time and place as stated above from 9 o'clock a.m. until 5 o'clock p.m. the apportionment for benefits and the lands comprised within the 0138 Lum & Extension, Branch #1 of Drainage District will be subject to review.

Sealed proposals will be received by me at the Genesee County Drain Office at 4608 Beecher Road, Flint, Michigan, 48532 at 11:00 A.M. on May 18, 2018, at which time and place all bids will be opened and read.

This project consists of the following approximate quantities...

1	Restricted Exc, 4' channel, 2:1	L.F.	40
2	F&I 18" CSP, 2 2/3"x1/2" Corr.,14 Ga, TDB	L.F.	16
3	F&I 18" CSP Flared End Section	EA.	1
4	F&I 36" CSP, 2 2/3"x1/2" Corr.,12 Ga, TDB	L.F.	70
5	F&I 36" CSP Flared End Section	EA.	1
6	F&I 36 RCP, C76 CLIII, TDB	L.F.	148
7	F&I 48" RCP, C76 CLIII, TDA	L.F.	2,390
8	F&I 60" CSP Flared End Section	EA	1
9	F&I 81"x59" CSPA, 3"x 1" Corr.,14 Ga, TDB	L.F.	60
10	F&I 81"x59" CSPA, 3"x 1" Corr.,10 Ga, TDB	L.F.	40
11	F&I 81"x59" CSPA Flared End Section	EA	6
12	F&I 128"x83" CSPA, 3"x 1" Corr.,10 Ga, TDB	L.F.	60
13	F&I 128"x83" CSPA Flared End Section	EA	2
14	8" SDR 26 TDA	L.F.	440
15	Connect existing 4" pipe to 8" SDR	EA	7
16	Structure/Pipe Tap, 4" to 6"	EA	5
17	Structure/Pipe Tap, 8" to 10"	EA	2
18	Structure/Pipe Tap, 12" to 18"	EA	2
19	F&I 48" Manhole Tee w/ 48" Riser and Cover "E"	EA.	5
20	F&I 7' dia. Drainage Structure w/Cover "E"	EA	2
21	F&I 8' dia Drainage Structure w/ Cover "E"	EA.	2
21	F&I 48" - 45° Prefab Bend C-76 RCP CLIII	EA.	2

22	F&I 48" – 22° Prefab Bend C-76 RCP CLIII	EA.	1
23	F&I 48" – 31° Prefab Bend C-76 RCP CLIII	EA.	1
24	F&I 48" – 9° Prefab Bend C-76 RCP CLIII	EA.	1
25	Plain Rip Rap	SYD	25
26	Remove and Replace Roadway, HMA	L.S.	2
27	Remove and Replace Roadway, Gravel	L.S.	1
24	Remove and Replace Driveway, HMA	L.S.	1
25	Remove and Replace Driveway, Gravel	L.S.	2
26	F&I Class B Seeding (200 lbs/acre)	Lbs	20
27	F&I Class B Seeding (125 lbs/acre)	Lbs	275
28	F&I Chemical Fertilizer Nutrient (240 lbs/acre)	Lbs	552
29	F&I Mulch (2 tons/acre)	Tons	4.6
30	SESC Measures	L.S.	1
31	Traffic Control	L.S.	1

All associate pavement removal and replacement, erosion control and restoration. These are summarized quantities only. Detailed quantities are listed in Bid Documents.

Bid Documents are available at the Genesee County Drain Office, 4608 Beecher Road, Flint, MI, 48532. \$10.00 non-refundable fee, only CHECK or MONEY ORDER accepted. BID DOCUMENTS ARE NOT MAILED OUT.

A Bid Bond in an amount equal to five percent (5%) of the bid amount is to be submitted with each bid. The successful bidder will be requested to furnish satisfactory performance, labor and material and maintenance and guarantee bonds.

The Drain Commissioner reserves the right to reject any or all bids and to waive any irregularities in bidding. No bid may be withdrawn after the scheduled closing time for receiving bids for at least 90 days.

Dated at Flint, May 1, 2018

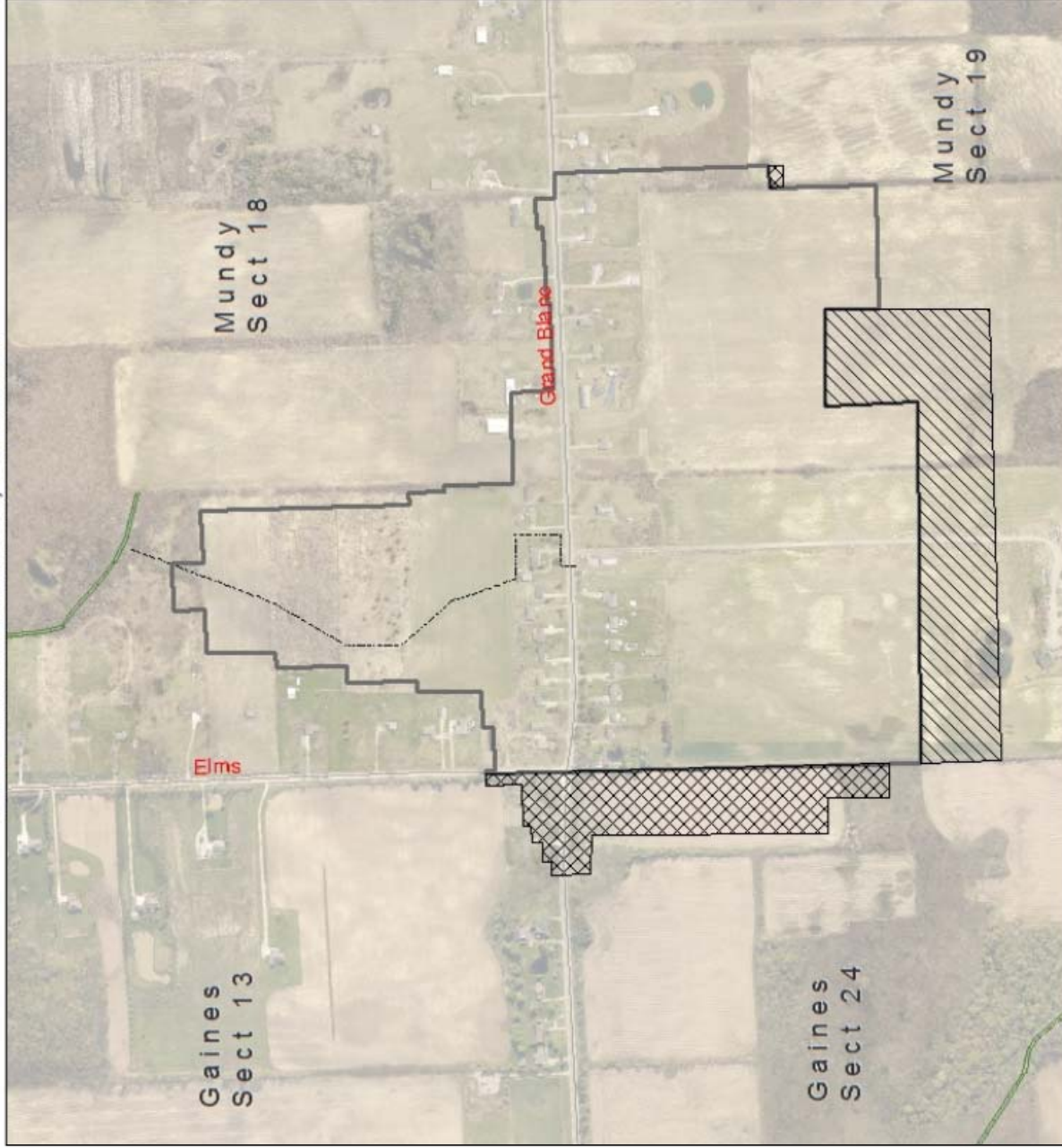
JEFFREY WRIGHT
GENESEE COUNTY DRAIN COMMISSIONER

The owner of any land in the special assessment district who may feel aggrieved by the apportionment of benefits made by the Drain Commissioner may, within 10 days after the day of review, appeal therefore by making application to the probate court of Genesee County for the appointment of a board of review and may further appeal from the report of the board of review by application for a writ of certiorari by the circuit court of Genesee County, all as provided in Sections 155 & 161 of the Drain Code (Act 40 of the Public Acts of Michigan, 1956, as amended).

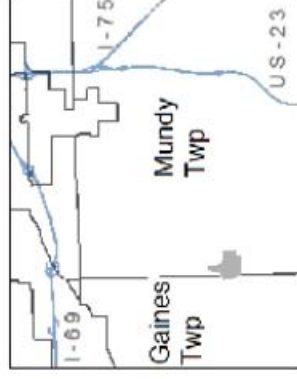
The owner of any land in the Drainage District aggrieved by the decision to revise or not to revise the drainage district boundaries by the Drain Commissioner may within 10 days after the day of review seek judicial review in the Genesee County Circuit Court. All as provided in section 197 of the Drain Code (Act 40 of the Public Acts of Michigan, 1956, as amended).

For hearing impaired residents: Genesee County will furnish reasonable auxiliary aids and services to individuals with disabilities upon 48 hours notice. Individuals needing assistance should write or call Genesee County Drain Commissioner, G-4608 Beecher Road, Flint, Michigan 48532, (810) 732-1590, TDD:(810) 732-1591 or Michigan Relay Center: 1-800-649-3777.

0138 Lum & Extension, Branch #1



Jeffrey Wright
Genesee County Drain Commissioner
4608 Beecher Rd., Flint MI 48532



-  Drainage District
-  Land Removed
-  Land Added

GCDC Drain

Type

-  Enclosed
-  Open



1 inch = 667 feet